



Cat. No. 01881923

Rev. D 01/06/03

DCO# 5378

Culligan® Preferred™ Series Drinking Water Filters Installation, Operation, and Service Guide

SPECIFICATIONS

Operating Pressure Range: 10 - 125 psi (0.7 bar - 8.6 bar)

Operating Temperature Range: 35 - 100°F (2 - 38°C)

Service Flow Rate: 0.5 gpm (1.9 Lpm)

Capacity: 750 gal. (2,839L) Preferred 150

1000 gal. (3,785L) Preferred 250

300 gal. (1,135L) Preferred 350

For cold water use only



NSF's Certification Program
is accredited by the American
National Standards Institute

NSF's Certification Program
is accredited by the Dutch
Council for Accreditation

System Tested and Certified by NSF
International against NSF/ANSI
Standards 42 and 53 for the reduction of:

Standard No. 42: Aesthetic Effects
Chemical Unit

Taste and Odor Reduction
Chlorine Reduction

Mechanical Filtration Unit

Particulate Reduction
99.9+% reduction of particles
one-half micron and larger in size

Standard No. 53: Health Effects

Chemical Reduction Unit

Lead Reduction
VOC Reduction (350 Only)

Mechanical Filtration Unit

Turbidity Reduction
Cyst Reduction
Asbestos Reduction

Validated by WQA according to NSF/ANSI 42
and 53 for the claims listed by NSF International
as verified and substantiated by test data.

Check for compliance with state and local laws and regulations.
Do not use with water that is microbiologically unsafe or of
unknown quality without adequate disinfection before or after the
system. Systems certified for cyst reduction may be used on
disinfected water that may contain filterable cysts.

Note that some states require licensed installers, and some
states prohibit the use of saddle valves.

INSTALLATION

Culligan recommends that Preferred Series Drinking Water
Filters be installed with a faucet dedicated to dispensing only
filtered water. Such a faucet is available from Culligan by
ordering P/N 01-0035-37*. Refer to the plumbing schematic
shown in Figure 1 when completing this type of installation.
Other recommended applications include point-of-use
drinking water coolers, refrigerators, and ice makers.

*Not tested or certified by NSF.

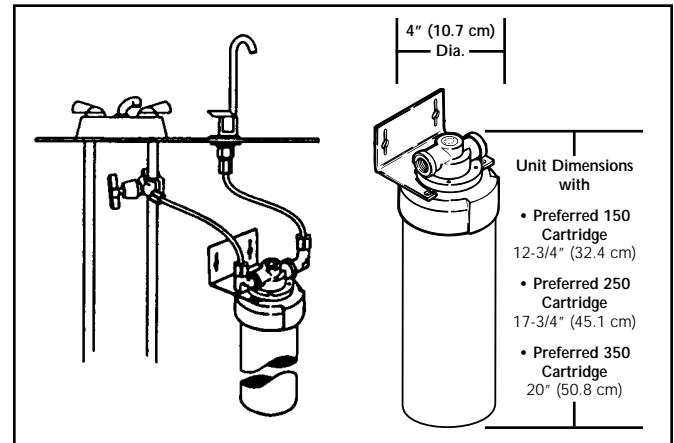


Figure 1

This filter system is supplied with fittings which are
designed for use with 1/4 inch O.D. polyethylene tubing;
available from Culligan by ordering P/N 00-4021-84*.

1. Select a location for the filter assembly which:
 - Provides a solid mount for the filter head.
 - Allows a minimum 2 inches (5 cm) of clearance
under the cartridge.
 - Allows space for inlet and outlet water line connections.

Note: The filter must be mounted vertically.

2. Provide an inlet water supply for the filter by tapping
the cold water line. This connection should accom-
modate 1/4 inch O.D. polyethylene tubing and must
comply with state and local laws and regulations.
3. Install the faucet or dispensing device according to the
instructions provided with the device.
4. Refer to Figure 2 to determine the best filter bracket
position to accommodate the water connections.
5. Install the 0.5 gpm flow restrictor fitting into the outlet
port on the filter head using Teflon tape.
Note: The restrictor is built into one of the elbow fittings.
6. Install the remaining 1/4 inch tubing fitting into the fil-
ter head inlet using Teflon tape.
7. Mount the filter head using the screws and washers
provided.
8. Connect the inlet and outlet tubing to the inlet and
outlet fittings of the filter. Double check the water
connections to be sure that water will follow the
direction-of-flow arrow on top of the head; water
supply to inlet fitting, outlet fitting to faucet.
9. Install the filter cartridge as detailed in Figure 3.
10. Flush the cartridge for three minutes to purge the
system of air.

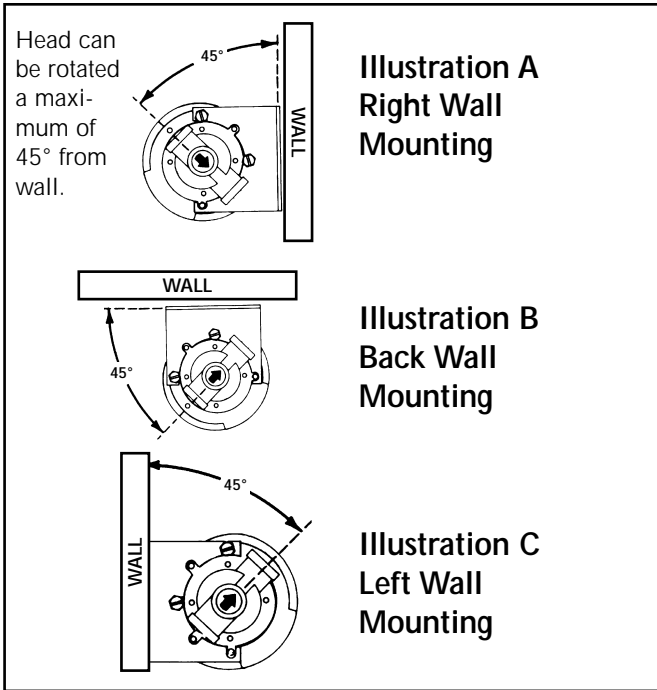


Figure 2

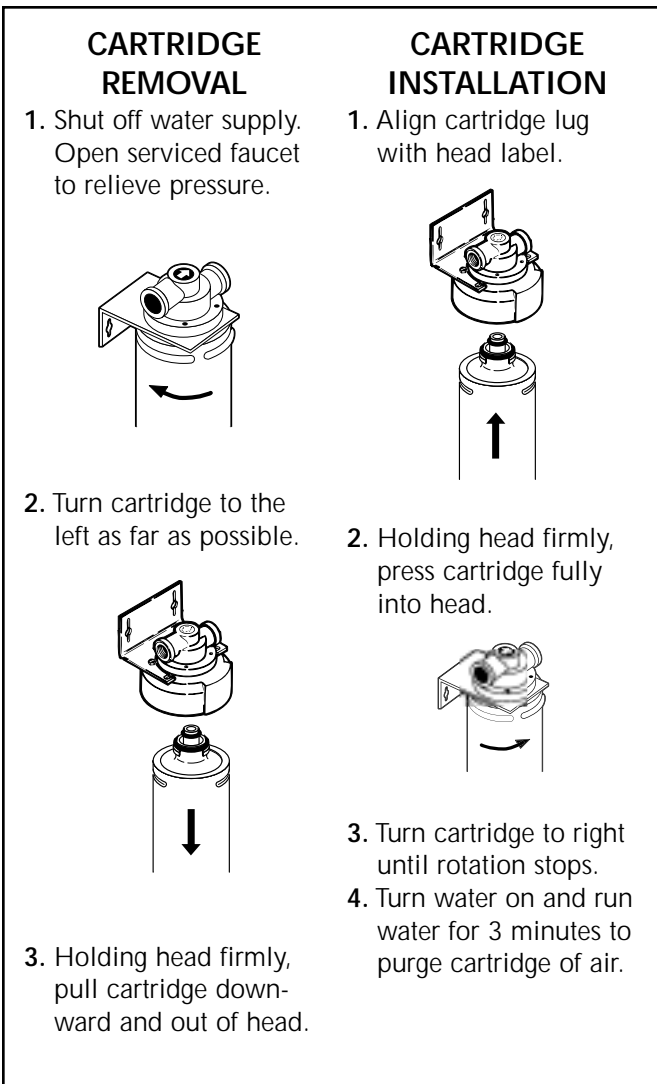


Figure 3

FILTER REPLACEMENT

These drinking water systems must be maintained according to the manufacturer's instructions, including timely replacement of filter cartridges. Follow the guidelines below to determine when the filter cartridge must be replaced in each system. Refer to Figure 3 for the service sequence.

Preferred™ 150 Filter

The filter cartridge must be replaced after every 750 gallons or one year of use (whichever comes first), or whenever there is a change in taste or odor or a noticeable decrease in flow. 750 gallons of water use is roughly equivalent to using 2 gallons of water daily for one year.

Preferred™ 250 Filter

The filter cartridge must be replaced after every 1000 gallons or one year of use (whichever comes first), or whenever there is a change in taste or odor or a noticeable decrease in flow. 1000 gallons of water use is roughly equivalent to using 2-1/2 gallons of water daily for one year.

Preferred™ 350 Filter

The filter cartridge must be replaced after every 300 gallons or one year of use (whichever comes first), or whenever there is a change in taste or odor or a noticeable decrease in flow. 300 gallons of water use is roughly equivalent to using 1-1/2 gallons of water daily for six months. Conforms to NSF/ANSI 53 for VOC reduction. See Performance Data Sheet for individual contaminants and reduction performance.

Replacement Cartridge Part Numbers

Preferred 150 Filter Cartridge	01-0028-68
Preferred 250 Filter Cartridge	01-0028-69
Preferred 350 Filter Cartridge	01-0028-70

Replaceable components and service parts are available through your local independent Culligan dealer. To learn the name of your nearest dealer, contact:

Manufactured by:
CULLIGAN INTERNATIONAL COMPANY

One Culligan Parkway
Northbrook, IL 60062
USA

(847) 205-6000
<http://www.culligan.com>

**This page contains materials and DCO information.
IT DOES NOT PRINT AS PART OF THE DOCUMENT!**

VENDOR MUST SUBMIT A MATERIAL CERTIFICATE OF COMPLIANCE WITH EACH SHIPMENT.

Materials & Description: Pro Series Instruction Sheet 01881923

Size: 8.5" x 11"

Color: Black; 2 Sided, 1 Sheet

Stock: 20# White

Other:

LET	CHANGE	BY	APRVD	DCO	DATE
A	TEXT REVISED	CF		97030	2/25/97
B	NO INFORMATION	XX	XX	XX	XXXXXX
C	TEXT CHANGES	KJK		99400	4/4/00
D	ADD SPEC/ARCHIVE DRAWING	LR	JB	4566	07/29/02
E	UPDATE TEXT OBSOLETE 307330	LR	JB	5378	01/06/03